



Flight Plan & Site Survey

Created using **RPAS Wilco®**

Reference No:

267EE4

Title:

CARFF Aug 12, 2025

Pilot Name:

Pilot Certificate:

Flight Start:

August 12, 2025 12:49 PM

Flight End:

August 12, 2025 2:49 PM

Flight Address:

Lat: 52.202333 Lng: -113.705135

Flight Area (Latitude):

52° 12' 8.40" N (52.202)

Flight Area (Longitude):

113° 42' 18.49" W (-113.705)

Altitude - Radius:

Alt: 400 ft - **Rad:** 926.0 m (0.5 nm)

Classification:

UNCONTROLLED

FIR - Contact:

CZEG - 780-890-8397

Please ensure you received all required authorizations prior to flight.

Disclaimer

This Site Survey was created using RPAS Wilco by AIM Robotics. The flight plan contained is intended only for RPAS flights on the date/time and location specified. The user accepts all responsibility for the accuracy and completeness of the information contained.

For the complete Terms & Conditions, see

<https://rpaswilco.com/#/tnc>

Included

Site Survey

Obstacles (if available)

Nearby Aerodromes

Canadian Aviation Regulations

GFA

Aerodrome Supplements

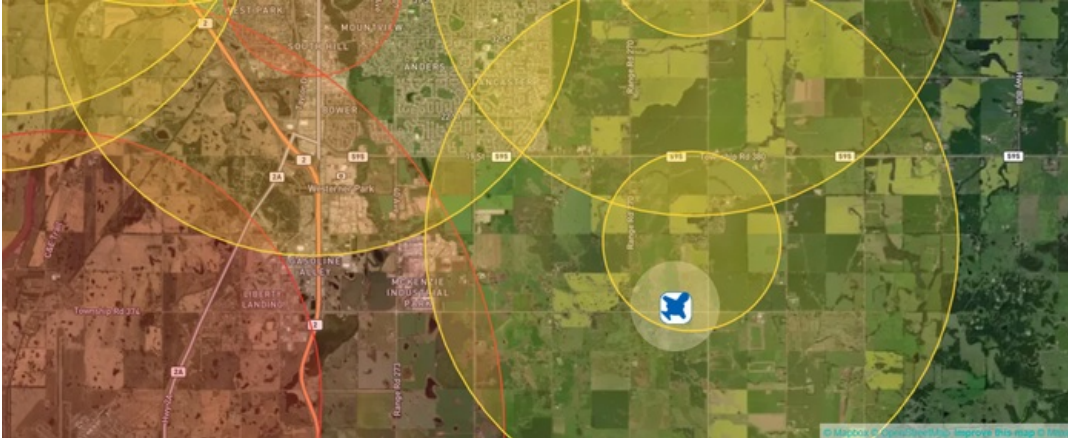
-METAR & TAF (if available)

-NOTAMs

-CFS





Flight Map



RPAS Specification

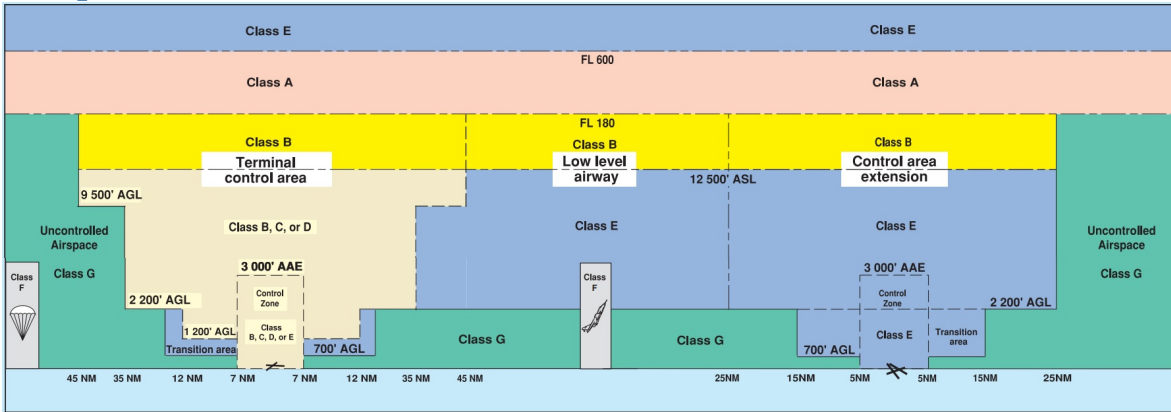
- **Manufacturer:**
MAAC
- **Model:**
MODEL AIRPLANE
- **Registration Number:**
- **Eligible for advanced operations:**
Yes
- **Manufacturer RPAS safety assurance:**
 - **Controlled Airspace:** Yes
 - **Near People:** N/A
 - **Over People:** N/A

Mission Location Details

		Latitude	Longitude
	MODEL	52° 12' 8.40" N (52.202)	113° 42' 18.49" W (-113.705)
	Pilot	52° 12' 7.04" N (52.202)	113° 42' 17.02" W (-113.7047)



Airspace Classification



Overlying Airspaces

Class	Name	Floor	Ceiling
E	Red Deer, AB TA	4000MSL	12500MSL
B	Red Deer, AB TA	12500MSL	18000MSL
E	T753 Airway	2200AGL	12500MSL
B	T753 Airway	12500MSL	18000MSL
E	T759 Airway	2200AGL	12500MSL
B	T759 Airway	12500MSL	18000MSL

Nearest Aerodromes & Distance from Operation

LEBLANC (CLB5 - HELIPORT - Reg)	Lat: 52.214	Long: -113.7	1.344KM	0.73NM	N
ALLAN DALE RESIDENCE (CAD2 - HELIPORT - Reg)	Lat: 52.269	Long: -113.699	7.425KM	4.01NM	N
RED DEER REGIONAL (CYQF - AERODROME - Cert)	Lat: 52.185	Long: -113.894	13.017KM	7.03NM	W
RED DEER REGIONAL HOSPITAL CENTRE (CRD3 - HELIPORT - Cert)	Lat: 52.262	Long: -113.816	10.051KM	5.43NM	NW
TRUANT SOUTH (CRD6 - AERODROME - Reg)	Lat: 52.278	Long: -113.915	16.583KM	8.95NM	NW

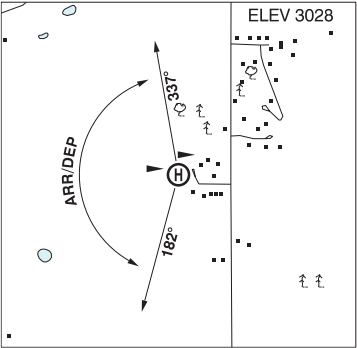
ALBERTA

AERODROME / FACILITY DIRECTORY

RED DEER / LEBLANC AB (Heli)

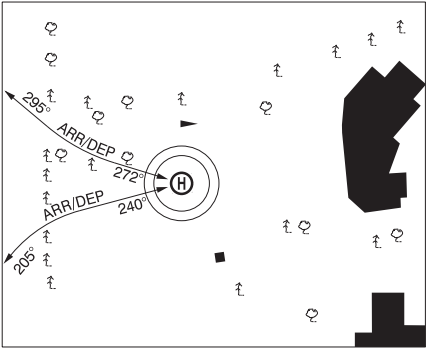
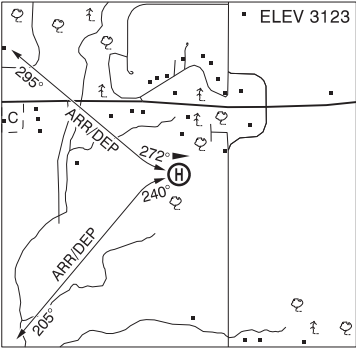
CLB5

REF	N52 12 52 W113 42 00 5.2ESE 14°E (2025) UTC-7(6) Elev 3028' A5005 A5015
OPR	Marcel LeBlanc 403-350-6868 Reg PPR
FLT PLN	
FIC	Edmonton 866-WXBRIEF (Toll free within Canada) or 866-541-4102 (Toll free within Canada & USA)
HELI DATA	FATO 64' dia GRASS/CONC TLOF 40' x 40' CONC Safety Area 75' x 75' Max heli overall length 43' Opr Ltd win maint
RCR	
COMM	
ATF	tfc 118.5 2NM 6100 ASL
PRO	Arr/dep 182° to 337° fr heli.
CAUTION	Trees N and S of heli. Lgtd twr 3763 ASL (450 AGL) 2.3NM NE of heli.



RED DEER / ALLAN DALE RESIDENCE AB (Heli)

CAD2



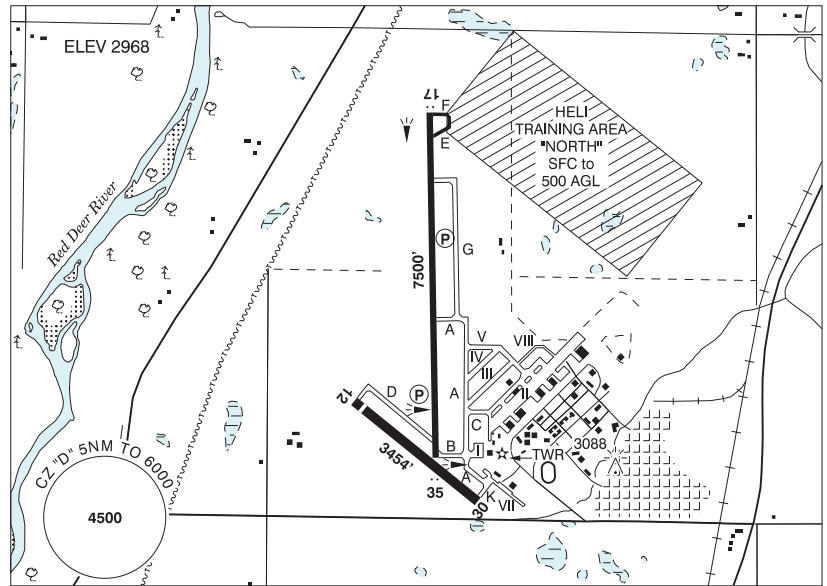
REF	N52 16 11 W113 41 59 4.1E 15°E (2015) UTC-7(6) Elev 3123' A5005 A5015
OPR	Allan Dale 403-350-8051 Reg PPR
PF	C-1,2,3,4,5,6
FLT PLN	
FIC	Edmonton 866-WXBRIEF (Toll free within Canada) or 866-541-4102 (Toll free within Canada & USA)
HELI DATA	FATO 58' dia GRASS TLOF 20' x 20' CONC Safety Area 77' dia Max heli overall length 38.4'
COMM	
RCO	Edmonton rdo 123.475 (FISE) 126.7 (bcst)
ATF	tfc 118.5 2NM 6200 ASL
PRO	Arr/dep curved 272° to 295° fr heli, slope 8% (H3), day use only. Arr/dep curved 240° to 205° fr heli, slope 8% (H3), day use only.
CAUTION	Trees on short final on all apch

ALBERTA

AERODROME / FACILITY DIRECTORY

RED DEER REGIONAL AB

CYQF



REF	N52 11 06 W113 53 40 6SSW 14°E (2016) UTC-7(6) Elev 2968' A5005 A5015 LO2 HI3 CAP
OPR	Red Deer Regional Aprt Authority 403-886-4388 Cert Ldg fees
PF	A-1,2,3,7 C-2,3,4,5,6
FLT PLN	
FIC	Edmonton 866-WXBRIEF (Toll free within Canada) or 866-541-4102 (Toll free within Canada & USA)
ACC	Edmonton IFR 888-358-7526
WX	METAR AUTO H24 (see COMM) WxCam TAF H24, issue times: 00, 06, 12, 18Z.
SERVICES	Call out chg may be levied for one or more svcs
FUEL	100LL, JA Hillman Air (100LL only, self serve); Sky Wings Avn (Executive Flt Centre) 15-04Z±; Tucana Avn
OIL	All
S	1,2,3,5 Tucana Avn
SUP FL	D & A-ice 2 hr PN Tucana Avn, LPOX
JASU	10/15
PVT ADV	Hillman Air 403-886-4187; Sky Wings Avn (Executive Flt Centre) 123.4 403-886-5191 15-04Z±; Tucana Avn 403-596-6320.
RWY DATA	Rwy 17(165°)/35(345°) 7500x150 ASPH Rwy 12(115°)/30(295°) 3454x100 ASPH Thld 12 displ 200' Rwy 30 up 0.52% RESA: 17/35 492'
RWY CERT	Rwy 17/35 AGN IIIB Rwy 12/30 AGN II
TWY CERT	Twy D AGN II
RCR	Opr CRFI & Win maint 1330-2200Z± Mon-Fri exc hols, O/T 2 hrs PN ctc 403-318-7842. Call out charge may be levied.

ALBERTA

AERODROME / FACILITY DIRECTORY

RED DEER REGIONAL AB (Cont'd)

CYQF

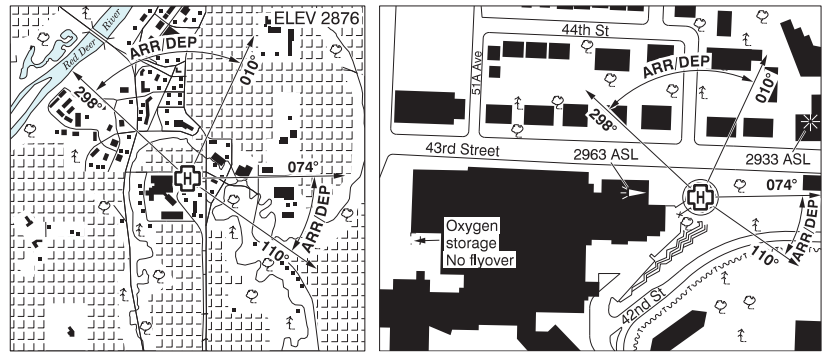
LIGHTING	12-(TE ME), 30-(TE ME), 17-AS(TE HI) P2, 35-AS(TE HI) P2 ARCAL-118.5 type K when TWR clsd
COMM	<div>RCOEdmonton rdo 123.475 (FISE) 126.7 (bcst)</div> <div>ATIS124.0 13-05Z‡</div> <div>GND121.9 13-05Z‡</div> <div>TWR118.5 (V) 13-05Z‡ (emerg only 403-886-4547)</div> <div>MFtfc 118.5 05-13Z‡ 5NM 6000 ASL (CAR 602.98)</div> <div>PALEdmonton Ctr 132.85</div> <div>AWOS124.0 05-13Z‡</div>
NAV	<div>NDBRed Deer YQF 320 (L) N52 07 42 W113 53 58</div> <div>DMERed Deer 6G 113.8 Ch 85 N52 10 52 W113 52 58 (2974') Pvt</div>
PRO	Rgt hand circuits Rwys 12 & 17 (CAR 602.96). Use Heli Training Area "NORTH" sfc to 500 AGL.
CAUTION	Wildlife in vic of rwys. Acft at opposite ends of Rwy 17/35 may not be vis to each other. Twy D sfc ruf. Practice IFR approaches in vic Rwy 17/35 extended ctr lines beyond CZ. Extv flt tng within 20NM of A/D, all quadrants to 6500 ASL. Parajumps activity in vic Innisfail A/D 8NM SSW check for NOTAM. Intsv gliding activity to 6400 ASL in vic Olds (Netook) A/D 21NM S by NOTAM. Winch cable may extend from sfc to 5800 ASL (2500 AGL).

ALBERTA

AERODROME / FACILITY DIRECTORY

RED DEER REGIONAL HOSP CENTRE AB (Heli)

CRD3



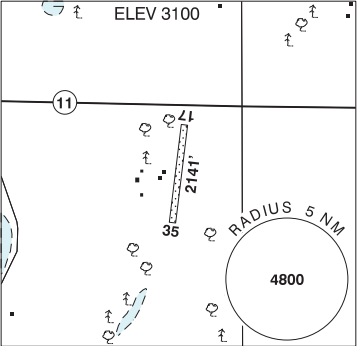
REF	N52 15 43 W113 48 57 15°E (2013) UTC-7(6) Elev 2876' A5005 A5015
OPR	Alberta Health Services 888-999-3770 Cert NVIS OPS AUTH PPR
PF	A-1,2,3 C-4,5,6
FLT PLN	
FIC	Edmonton 866-WXBRIEF (Toll free within Canada) or 866-541-4102 (Toll free within Canada & USA)
ACC	Edmonton IFR 888-358-7526
HELI DATA	FATO 86' dia non-supporting TLOF 57' dia CONC elevated Safety Area 115' dia 16,000 lbs Max heli overall length 57.4' (CAR 602.96)
LIGHTING	RY(LO) green
COMM	
RCO	Edmonton rdo 123.475 (FISE) 126.7 (bcst)
ATIS	124.0
TWR	Red Deer 118.5 (V) 13-05Z± (emerg only 403-886-4547)
MF	tfc 118.5 05-13Z± 5NM centered on Red Deer Regional A/D 5.8NM S 6000 ASL (CAR 602.98)
PAL	Edmonton Centre 132.85
PRO	Arr/dep 074° to 110° fr heli, (H1) (CAR 602.96). Arr/dep 298° to 010° fr heli, (H1) (CAR 602.96).
CAUTION	Marked P-lines and poles 165' SE, 20' AAE. Bldg 307' NE, 57' AAE, marked with obst lgts. Hosp 113' W, 87' AAE marked with lgtd WI.

ALBERTA

AERODROME/FACILITY DIRECTORY

RED DEER / TRUANT SOUTH AB

CRD6

REF	N52 16 40 W113 54 55 3.9W 15°E (2012) UTC-7(6) Elev 3100' A5005 A5015	
OPR	Mike Truant 403-346-6143 Reg PPR	
FLT PLN		
FIC	Edmonton 866-WXBRIEF (Toll free within Canada) or 866-541-4102 (Toll free within Canada & USA)	
RWY DATA	Rwy 17(172°)/35(352°) 2141x50 GRASS	
RCR	Opr No win maint	
COMM		
TWR	Red Deer 118.5 (V) 13-05Z† (emerg only 403-886-4547)	
ATF	tfc 118.5 2NM 6000 ASL excluding airspace within CYQF CZ	
PRO	Red Deer Common Frequency Area 122.875 outside of A/D ATF. See SECTION C PLANNING.	
CAUTION	Hwy 11 at N end treat as 50 AGL obst. Driveway mid field running E/W. P-lines 328' E/W of strip. Markers each side of rwy every 200'. A/D underlies arr/dep path for CYQF Rwy16/34 aprx 5.5NM S.	

Canadian Aviation Regulations

Division III — General Operating and Flight Rules

For full listing please visit : <https://laws-lois.justice.gc.ca/eng/regulations/SOR-96-433/FullText.html#s-901.27>

Visual Line-of-sight

- **901.11 (1)** Subject to subsection (2), no pilot shall operate a remotely piloted aircraft system unless the pilot or a visual observer has the aircraft in visual line-of-sight at all times during flight.
- **(2)** A pilot may operate a remotely piloted aircraft system without the pilot or a visual observer having the aircraft in visual line-of-sight if the operation is conducted in accordance with a special flight operations certificate — RPAS issued under section 903.03.

Procedures

- **901.23 (1)** No pilot shall operate a remotely piloted aircraft system unless the following procedures are established:
 - **(a)** normal operating procedures, including pre-flight, take-off, launch, approach, landing and recovery procedures; and
 - **(b)** emergency procedures, including with respect to
 - **(i)** a control station failure,
 - **(ii)** an equipment failure,
 - **(iii)** a failure of the remotely piloted aircraft,
 - **(iv)** a loss of the command and control link,
 - **(v)** a fly-away, and
 - **(vi)** flight termination.
- **(2)** If the manufacturer of the remotely piloted aircraft system provides instructions with respect to the topics referred to in paragraphs (1)(a) and (b), the procedures established under subsection (1) shall reflect those instructions.
- **(3)** No pilot shall conduct the take-off or launch of a remotely piloted aircraft unless the procedures referred to in subsection (1) are reviewed before the flight by, and are immediately available to, each crew member.
- **(4)** No pilot shall operate a remotely piloted aircraft system unless the operation is conducted in accordance with the procedures referred to in subsection (1).

Site Survey

901.27 No pilot shall operate a remotely piloted aircraft system unless, before commencing operations, they determine that the site for take-off, launch, landing or recovery is suitable for the proposed operation by conducting a site survey that takes into account the following factors:

- **(a)** the boundaries of the area of operation;
- **(b)** the type of airspace and the applicable regulatory requirements;
- **(c)** the altitudes and routes to be used on the approach to and departure from the area of operation;
- **(d)** the proximity of manned aircraft operations;
- **(e)** the proximity of aerodromes, airports and heliports;
- **(f)** the location and height of obstacles, including wires, masts, buildings, cell phone towers and wind turbines;
- **(g)** the predominant weather and environmental conditions for the area of operation; and
- **(h)** the horizontal distances from persons not involved in the operation.

Operations at or in the Vicinity of an Aerodrome, Airport or Heliport

- **901.47 (1)** No pilot shall operate a remotely piloted aircraft at or near an aerodrome that is listed in the *Canada Flight Supplement* or the *Water Aerodrome Supplement* in a manner that could interfere with an aircraft operating in the established traffic pattern.
- **(2)** Subject to section 901.73, no pilot shall operate a remotely piloted aircraft at a distance of less than
 - **(a)** three nautical miles from the centre of an airport; and
 - **(b)** one nautical mile from the centre of a heliport.
- **(3)** No pilot shall operate a remotely piloted aircraft at a distance of less than three nautical miles from the centre of an aerodrome operated under the authority of the Minister of National Defence unless the operation is conducted in accordance with a special flight operations certificate — RPAS issued under section 903.03.

Records

- **901.48 (1)** Every owner of a remotely piloted aircraft system shall keep the following records:
 - **(a)** a record containing the names of the pilots and other crew members who are involved in each flight and, in respect of the system, the time of each flight or series of flights; and
 - **(b)** a record containing the particulars of any mandatory action and any other maintenance action, modification or repair performed on the system, including
 - **(i)** the names of the persons who performed them,
 - **(ii)** the dates they were undertaken,
 - **(iii)** in the case of a modification, the manufacturer, model and a description of the part or equipment installed to modify the system, and
 - **(iv)** if applicable, any instructions provided to complete the work.
- **(2)** Every owner of a remotely piloted aircraft system shall ensure that the records referred to in subsection (1) are made available to the Minister on request and are retained for a period of
 - **(a)** in the case of the records referred to in paragraph (1)(a), 12 months after the day on which they are created; and
 - **(b)** in the case of the records referred to in paragraph (1)(b), 24 months after the day on which they are created.
- **(3)** Every owner of a remotely piloted aircraft system who transfers ownership of the system to another person shall, at the time of transfer, also deliver to that person all of the records referred to in paragraph (1)(b).

LEBLANC - CLB5 - Reg

NOTAM

(F3693/25 NOTAMN

Q) CZVR/QCEAS/I/B/E/000/999/5039N11930W251

A) CZVR B) 2508121600 C) 2508122200

E) KAMLOOPS RADAR U/S.

FLT WITHIN RADIUS 250NM CENTRE 503922N 1192946W

WITHIN VANCOUVER FIR MAY BE DENIED ROUTING AND/OR ALT REQUESTS.

IFR TRAINING FLT MAY BE RESTRICTED OR NOT AUTH.)

(F3672/25 NOTAMN

Q) CZEG/QWLLW/IV/NBO/W/000/600/5143N11406W075

A) CZEG B) 2508101800 C) 2508140300

D) AUG 10 12-13 1800-0300

E) RADIOSONDE BALLOON LAUNCH WILL TAKE PLACE 514240N 1140624W

(AT OLDS-DIDSBURY AD (CEA3)), ASCENT RATE 900FPM.

F) SFC G) FL600)

(F3357/25 NOTAMR F1275/25

Q) CZXX/QOEXX/IV/NBO/E/000/999/6650N11045W999

A) CZEG CZVR B) 2507251455 C) 2510251400EST

E) AIRSPACE SECURITY WARNING ISSUED BY THE DEPARTMENT OF TRANSPORT

IN RESPONSE TO THE SECURITY SITUATION IN THE DEMOCRATIC REPUBLIC

OF CONGO. CANADIAN AIR OPERATORS AND OWNERS OF AIRCRAFT

REGISTERED IN CANADA ARE RECOMMENDED TO MAINTAIN A FLIGHT LEVEL

AT OR ABOVE FL260 WITHIN THE AREA BOUNDED BY 010000N 0302800E -

010000N 0253000E - 050000S 0253000E - 050000S 0292200E -

010000N 0302800E IN FIR KINSHASA (FZZA) DUE TO RISK FROM

ANTI-AIRCRAFT WEAPONRY.)